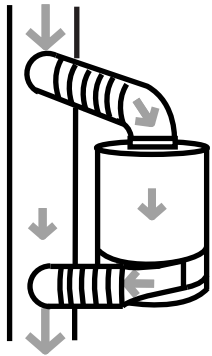
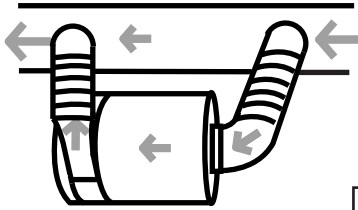


Installation Guide

Duct By-Pass



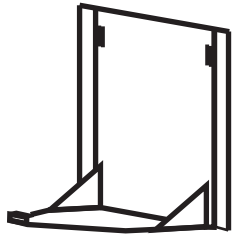
Vertical duct bypass



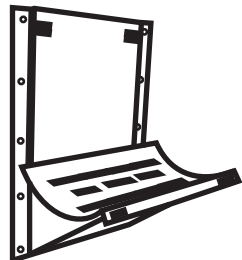
Horizontal duct bypass

6 feet
between
connections
recommended

Wall mount brackets available



Vertical



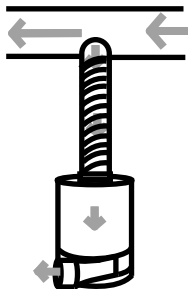
Horizontal

Standard
5" flanges
for easy
connection

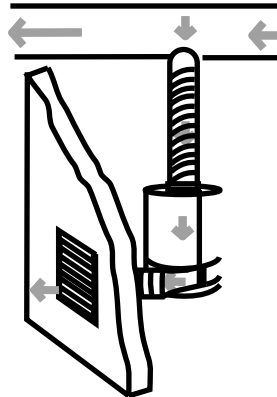
No hardware
connection
plug-in only



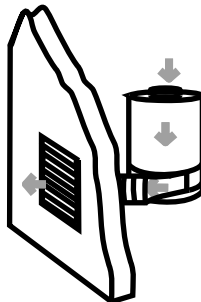
Other Installations



Extraction from duct



Duct to wall vent



Free air to wall vent



Operating & Filter Replacement Directions

P600-W

Thank You for choosing an
Airpura High Efficiency Air Purifier
To bring you the benefits of clean indoor air

To Begin Using Your Airpura...

- Inspect the exterior of your Airpura to verify there is no damage from shipping. If any damage is noted please follow the instructions in the Airpura returns policy.
- Assemble the unit by attaching the top cover and the outlet elbow following the assembly instructions on page 2 of this guide
- Install the unit following the installation instructions on the back cover of this guide
- Plug the unit into a regular grounded 110 volt outlet
- Turn on the unit to MAX and allow it to run for a few minutes
- Set the variable speed control to the level you wish
- The most efficient way to use your Airpura for regular air quality maintenance is to run it at a low speed 24 hours a day 7 days a week

Feel the difference breathing clean air makes
to your health

Always unplug the unit before beginning filter replacement

UV Lamp and Titan Clean reflector Replacement

Open the filter chamber

Undo the butterfly nut on the Titan Clean reflector and take out the retaining bolt

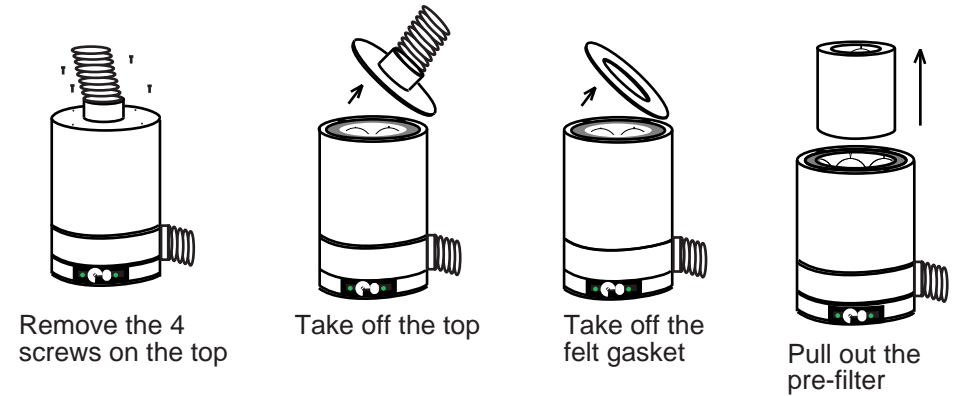
Undo the 2 screws holding the Titan Clean reflector

Pull out the bulb and Titan Clean reflector

Push the replacement bulb firmly into the connector

Replace the Titan Clean reflector and do up the butterfly nut

Close the filter chamber



Filter Replacement

The Activated Carbon Filter

Should be changed as needed in heavy applications and at least every 24 months in normal use.

The HEPA Filter

Should be replaced at least every 3 to 5 years of normal use

The Pre-Filter

Should be replaced at least every 6 to 12 months of normal use

